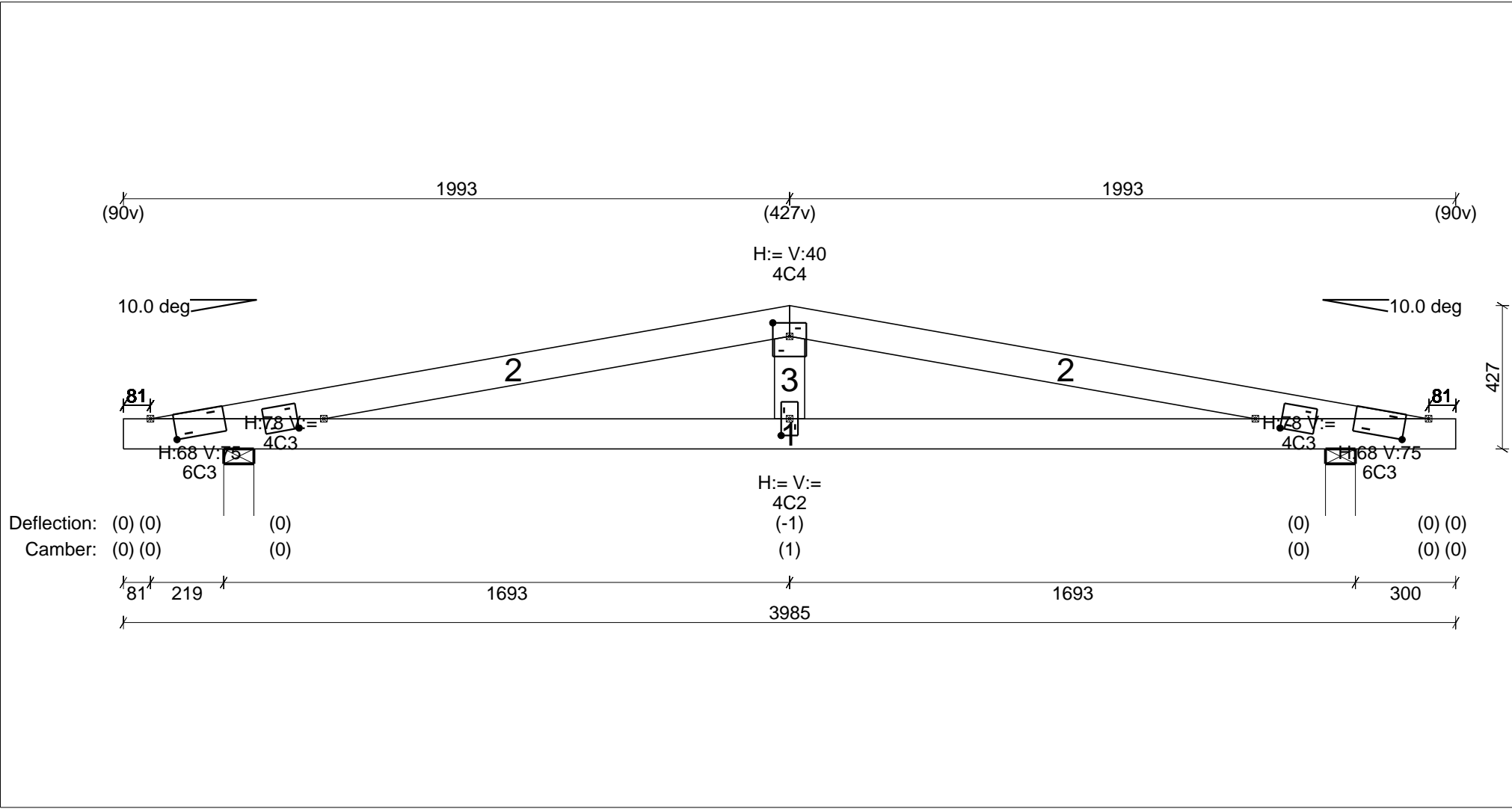


PRODUCTION SHEET

Job: 802117s3p1  
"S1" - 6 Single Trusses - (35mm thick)  
Approx truss weight : 13 kg

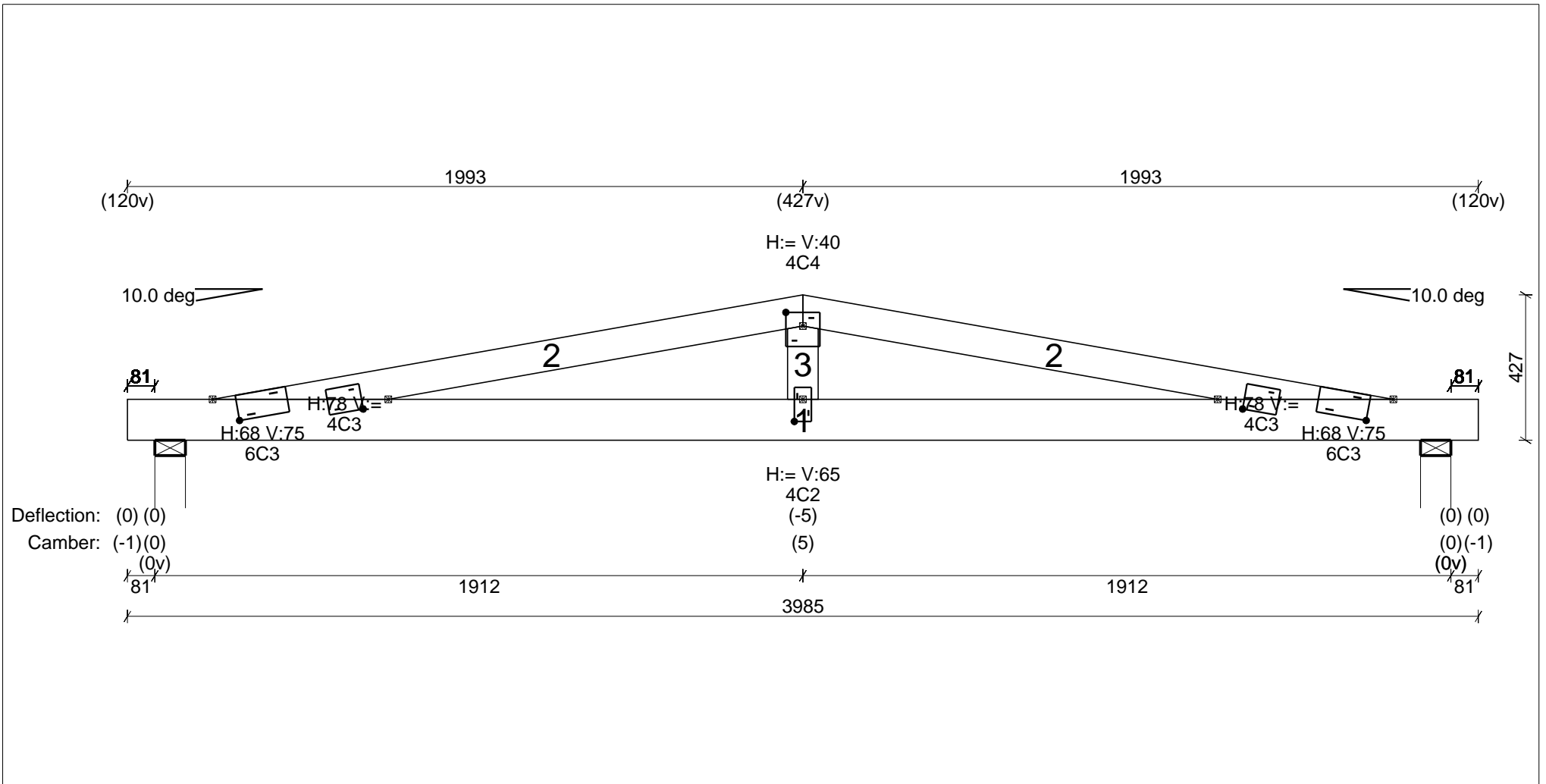


Timber Group: Manufactured

ID	Type	Timber	Qty	Length	Bracing
1	RC	90MGP10T2	6	3985	
2	TC	90MGP10T2	12	1941	

ID	Type	Timber	Qty	Length	Bracing
3	Weh	90MGP10T2	6	246	

# PRODUCTION SHEET



### Timber Group: Manufactured

ID	Tvne	Timber	Qty	Length	Bracing
1	RC	120hVSPAN+ T2	2	3985	
2	TC	90MGP10T2	4	1768	

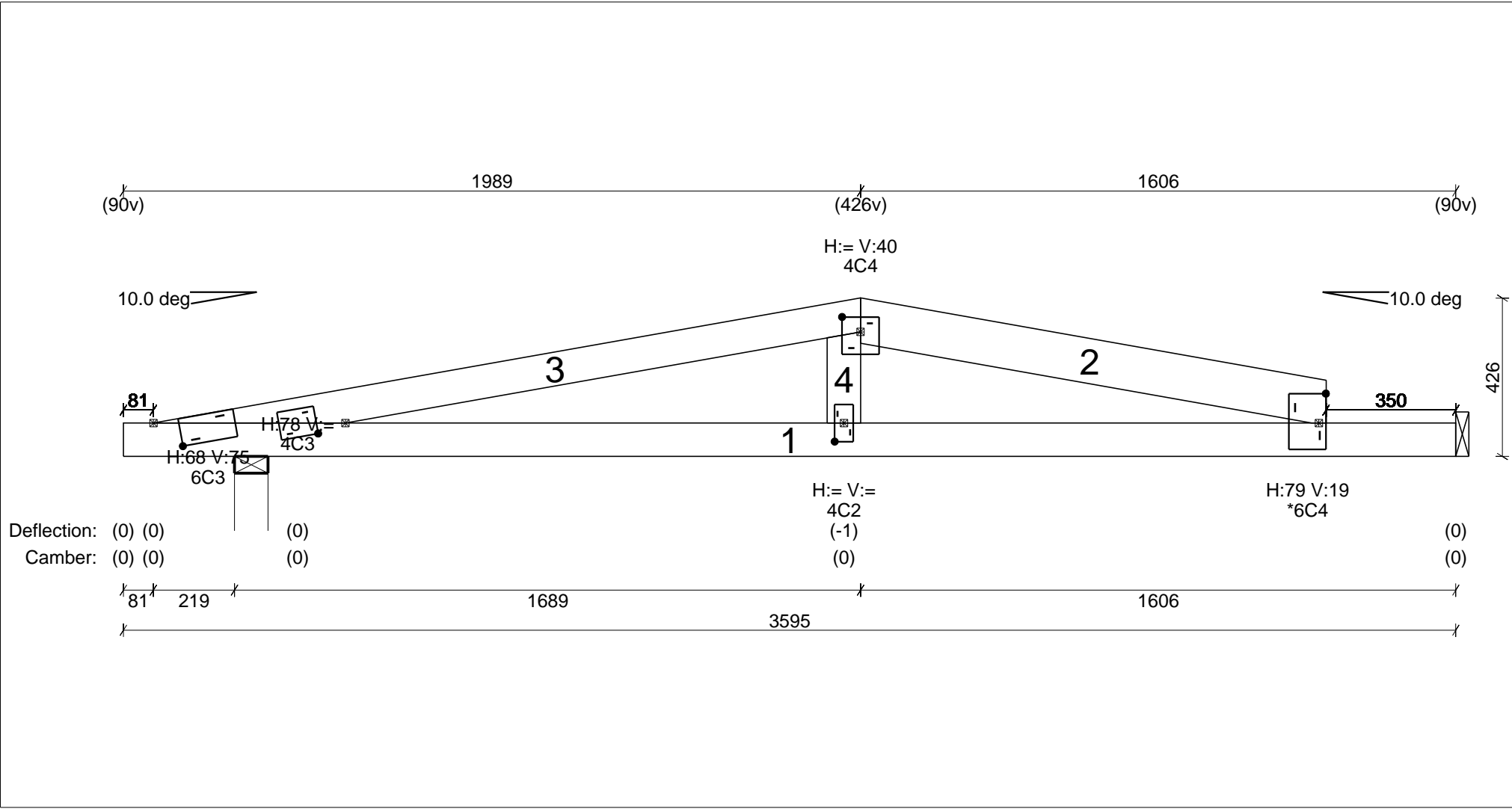
ID	Tvne	Timber	Qty	Length	Bracing
3	Web	90MGP10T2	2	216	

## Fixing Details

Double truss - Fix plies with 65 x 2.8 dia nails at 250 c/s (staggered) in chords and webs (1 row for timber widths up to 100mm, 2 rows up to 200mm, otherwise 3 rows).

PRODUCTION SHEET

Job: 802117s3p1  
"S2" - 5 Single Trusses - (35mm thick)  
Approx truss weight : 13 kg



Timber Group: Manufactured

ID	Tvne	Timber	Qty	Length	Bracing
1	RC	90MGP10T2	5	3595	
2	TC	120hvSPAN+ T2	5	1285	

ID	Tvne	Timber	Qty	Length	Bracing
3	TC	90MGP10T2	5	1938	
4	Weh	90MGP10T2	5	245	